

Multi-layer Composite Centralizer (MCC)



Antelope's revolutionary Multi-Layer Composite Centralizer (MCC) combines industry-leading durability with superior performance in a structural centralizer that is easily installed anywhere. The composite materials are resistant to temperature, shear, impact, compression and surface abrasion, making it one of the most casing-friendly centralizers on the market. Its extremely low friction factor and high wear resistance make it a must-have oil tool for technically demanding wellbores.

- Increase Stand-Off
- Simple Application
- Quick Installation
- Installation Anywhere
- Flexible Design

PROPERTIES

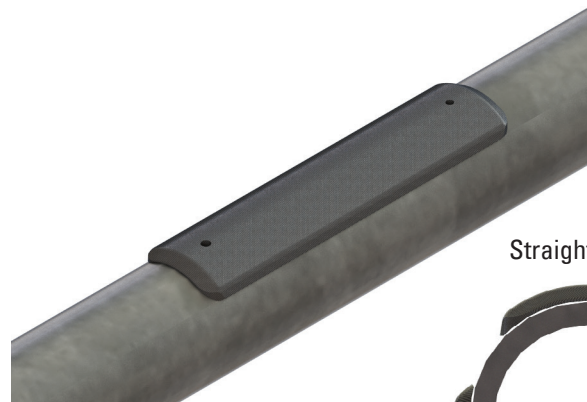
- Adhesion > 6,000 psi
- Temperature resistance > 374°F
- Compressive strength 42,000 psi
- Tensile strength 36,000 psi
- Impact resistance 33 feet 2 lb. drop ball, no damage

ADVANTAGES

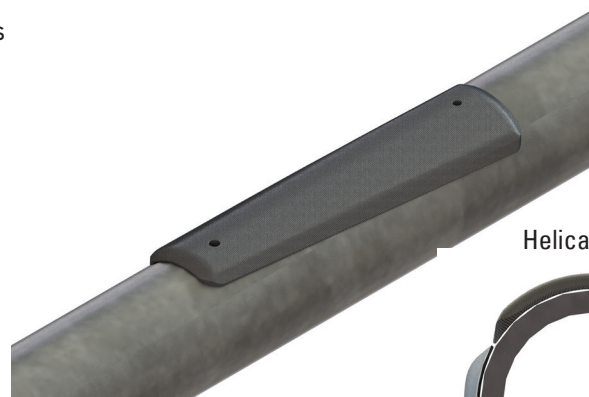
- Very low coefficient of friction
- High wear resistance but casing friendly
- Flexibility of design allows the optimal solution for each situation
- Low impact geometry for restrictions / obstructions
- Very robust construction – high mechanical properties
- Staggered placement to give optimal fluid bypass

APPLICATIONS

- Lean profile / close tolerance
- HPHT wells
- Sidetracks & multilaterals
- ERD wells
- Expandables
- Predrilled & slotted liner
- Restrictions
- ECD issues
- Differential sticking



Straight Blade Centralizer



Helical Blade Centralizer

