

Inner - String Cementing - API RP10F IIIC



Antelope's 306 Stab-In Float Shoe and 341 Stab-In Float Collar utilize the proven FGMax™ 1 phenolic plunger valve, while the 316 Stab-In Float Shoe and 351 Stab-In Float Collar utilize the FGMax™ 2 phenolic plunger valve and robust stab-in receptacle for optimum inner-string cementing. Tested in a state-of-the-art facility, the float equipment is supplied with a valve tested to API RP10F Category IIIC.

306/316 - STAB-IN FLOAT SHOE

The 306 and 316 Series Stab-In Shoes are typically fitted with a round nose that helps guide the casing to the target depth. They can also be provided with ports (up, down or side) and various types of noses to suit different applications.

341/351 - STAB-IN FLOAT COLLAR

With a valve assembly made from high temperature, high strength phenolic, the 341 and 351 Series Stab-In Collars feature a balanced spring force that ensures sealing occurs even in low differential pressures. Like the 306 and 351 Series, they are ideal for large diameter casing, where cement can be pumped through the drill pipe or tubing, reducing cement displacement time and volume pumped.

- Offshore well cementing where pumping through tubing is preferred
- Stinger (361 Series) includes 4 o-rings providing a positive seal once stabbed into receptacle
- PDC and Tri-cone Bit drillable

OPTIONS:

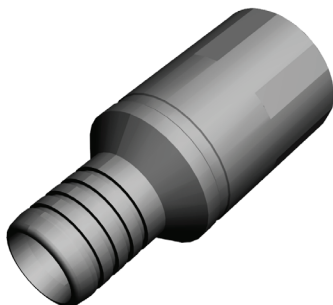
- Single or dual valve configuration
- Pre-set as autofill
- Premium grades and premium connections
- Latch-In dart to be ordered separately
- Stab-In/ Latch-In Receptacle



306 - Stab-In Shoe



341 - Stab-In Collar



361 - Stab-In Stinger

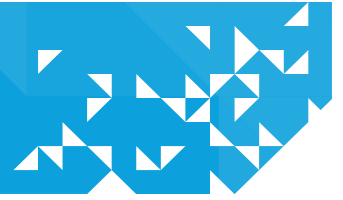


Drill Pipe Latch-In Dart



544 - Drill Pipe Centralizer





FLOW-GUARD MAX™ 1

Valve Specifications:

Valve Size:	2.5 in (63mm)
Valve Type:	Phenolic Plunger
API RP10F Rating:	Category IIIC
Tested Flow Rate:	10 BPM
Tested Flow Durability:	24 Hours
Temperature Rating:	400°F
Valve Back Pressure Rating:	5000 psi*
Inlet ID:	1.875 in
Minimum Flow Area:	2.76 in ²

* Backpressure rating of valve per parameter of API RP10F Category IIIC.



FLOW-GUARD MAX™ 2

Valve Specifications:

Valve Size:	3.5 in (89mm)
Valve Type:	Phenolic Plunger
API RP10F Rating:	Category IIIC
Tested Flow Rate:	10 BPM
Tested Flow Durability:	24 Hours
Temperature Rating:	400°F
Valve Back Pressure Rating:	5000 psi*
Inlet ID:	2.650 in
Minimum Flow Area:	5.52 in ²
Maximum Flow Rate:	20 bbl/min**

* Backpressure rating of valve per parameter of API RP10F Category IIIC.

** Valve tested to 20 bbl/min max flow rate.