

# Guide Shoes



Antelope's offers two styles of guide shoes. The 320 Series Guide Shoe allows the casing to overcome well obstacles by guiding it in the center of the hole. It is attached at the bottom of the casing string to provide a cost-effective solution that allows the casing to minimize problems passing through rock ledges or washouts in the wellbore as casing is lowered into the well. The 322 Series Guide Shoe can be rotated through obstacles.

## 320 - GUIDE SHOE

Our standard guide shoe, the 320 Series, protects and reinforces the casing while guiding it to the cementing depth. A large orifice enables debris to exit casing through the shoe and ensures healthy flow rate.

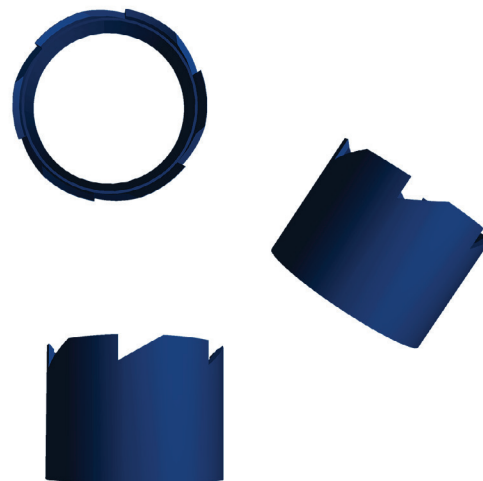
## 322 - TEXAS PATTERN GUIDE SHOE

This guide shoe is saw-cut to make teeth like steel blades at the end of the shoe to reinforce the end of the casing on shallow strings. Antelope's 322 Series provides a solution for formation swelling into the wellbore by maintaining the wellbore ID to coupling diameter. This guide shoe allows the casing to be slowly rotated to cut past obstacles in the hole.

- PDC Drillable
- Protects the casing string from total depth impact
- Reinforces the bottom joint of casing
- Allows the casing string to be worked through swelled zones
- Assist casing string through narrow and deviated holes, as well as areas with hard shoulders



320 - Guide Shoe with Concrete Nose



322 - Texas Pattern Guide Shoe