

800 Series - Hinged, NON-Welded, Imperial and Dual Contact Bow Centralizer



Offering easy installation and excellent casing centralization for vertical, deviated and horizontal wells, Antelope's hinged non-welded bow spring centralizers are available for all standard casing/hole sizes. The imperial bow spring design of the 800 Line provides strong restoring forces while keeping the starting and running forces at a minimum. Our high-quality centralizers also reduce the effects of channeling by improving the cement flow, creating a more uniform thickness between the casing and wellbore.

800 - HINGED, NON-WELDED, BOW SPRING CENTRALIZER

The 800 Series features straight, non-welded bow springs that are attached with rivets onto the hinged end collars. Normally run over a stop collar or coupling, this centralizer uses hinge pins to secure the hinged designed end collars together around the casing.



807 - HINGED, NON-WELDED, BOW SPRING CENTRALIZER WITH TURBO FINS

This centralizer consists of straight, non-welded bow springs with the addition of spot-welded turbo fins that are attached to the bow springs. The turbo fins induce a spiral flow pattern to cement slurry and assist in the removal of mud cake, and help reduce channeling during cementing operations.

- API Spec. 10D rated
- Hinged design with a more aggressive bow profile on each end
- Minimum starting force, and high restoring force
- Non-weld centralizers are shipped in halves and wired together to reduce shipping cost
- Improved turbulence in annulus by utilization of turbo fins
- Centralizers are designed and tested for specified casing and hole size combinations. Any attempt to run through smaller restrictions may cause excessive starting force and/or damage.
- Manufactured to customer specifications upon receipt of order
- Specify casing, hole and restriction sizes when ordering



Casing Sizes:	4-1/2" to 20"
Collar Material:	A569/ A1011
Bow Spring Material:	AISI 4130

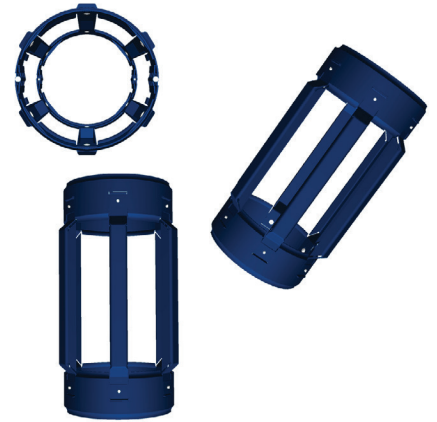
800 Series - Hinged, NON-Welded, Imperial and Dual Contact Bow Centralizer



805 - HINGED, NON-WELDED, POSITIVE BAR CENTRALIZER

The 805 employs straight formed positive bars that are attached using rivets onto the hinged end collars. Like the 800 Series, steel hinge pins are used to firmly attach the collars to the casing.

- Suitable for horizontal and directional well designs
- Favorable in cased hole situations
- Not to be run around a coupling or stop collar
- Hinged design with positive steel bar mechanically attached to hinged end collars
- Non-weld centralizers are shipped in halves and wired together to reduce shipping cost
- Centralizers are designed for specified casing and hole size combinations. Any attempt to run through smaller restrictions may cause excessive starting force and/or damage.
- Install between two Antelope stop collars, or a stop collar and coupling
- Manufactured to customer specifications upon receipt of order
- Specify casing, hole and restriction sizes when ordering



Casing Sizes:	4-1/2" to 20"
Collar Material:	A569/ A1011
Vane Material:	A36

880 - HINGED, NON-WELDED, DUAL CONTACT BOW SPRING CENTRALIZER

The 880 is the non-welded version of the 780 Series dual contact bow spring centralizer. The double bow design makes it ideal for small-clearance situations.

- Suitable for horizontal and directional well designs
- API Spec. 10D rated
- Hinged design with a dual contour bow profile
- Little to no starting force, and high restoring force
- Hinged design allows for easy installations
- Centralizers are designed and tested for specified casing and hole size combinations. Any attempt to run through smaller restrictions may cause excessive starting force and/or damage.
- Manufactured to customer specifications upon receipt of order
- Specify casing, hole and restriction sizes when ordering



Casing Sizes:	2-7/8" to 20"
Collar Material:	A569/ A1011
Bow Spring Material:	AISI 4130

